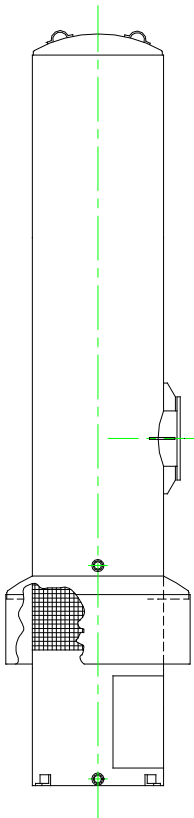


VANEC

Model 261 Intake Filter Silencer



Standard Features:

- ✓ All Steel Welded Construction
- ✓ Quality Fabrication Techniques
- ✓ Replaceable Filter Elements
- ✓ Filter Elements Protected from Rain
- ✓ Plate Flanges to Match ASA 125# Flanges
- ✓ High Strength Filter Frame Assembly to Prevent Filter Blow Out.
- ✓ Base Mounting Clips
- ✓ Filter Access Doors
- ✓ Prime Coated Exterior Surfaces

Optional Features:

- ✓ Outlet Nozzle can be Installed in a Choice of Locations
- ✓ Finish as Specified
- ✓ Materials as Specified
- ✓ Companion Flanges
- ✓ Flange Drilling as Specified
- ✓ Mounting as Specified
- ✓ Differential Pressure Gauge Ports

Applications:

The **VANEC** Model 261 Intake Filter Silencer is designed for use on naturally aspirated and turbocharged engines, gas turbine intakes, and other similar types of air breathing equipment.

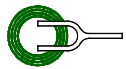
The Model 261 Intake Filter Silencer, when properly applied, will remove 92% of all dust impinging on the element. The high dirt holding capacity of the filter allows it to hold up to 290 grams of dust per panel before reaching the maximum recommended pressure drop.

The integral silencer can be engineered to reduce the noise levels from a variety of engine types. The intake noise spectrum will determine the exact dimensions of the filter Silencer. For filtering without the integral silencer, see the **VANEC** Model 267 Intake Filter.

This series is designed for vertical installation.

For a greater degree of filtration or noise control, contact VANEC for recommended enhancements.

Issue: 10/2002



VANEC Vibration And Noise Engineering Corporation

Phone: (716) 827-4959

Fax: (716) 827-1041

3374 Benzing Road, Orchard Park, New York 14127

www.vanec.com