

VANEC

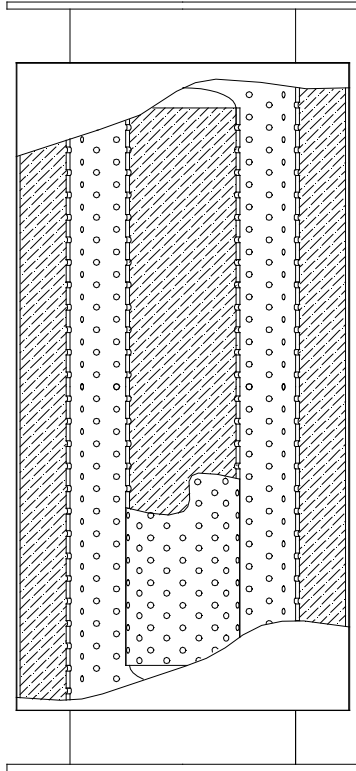
Model 417 Exhaust Silencer

Standard Features:

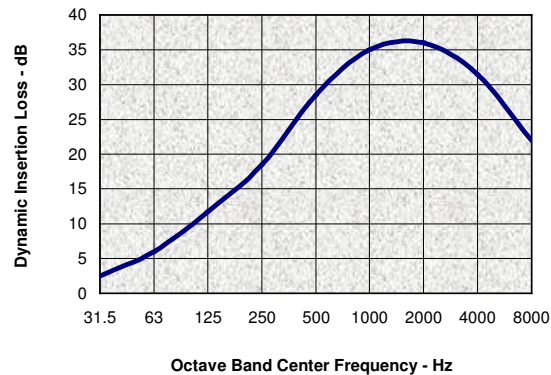
- ✓ All Steel Welded Construction
- ✓ Quality Fabrication Techniques
- ✓ Fiberglass Absorptive Pack
- ✓ Operating Temperature Above 250°F
- ✓ Plate Flanges to Match ASA 125# Flanges
- ✓ Prime Coated Exterior Surfaces

Optional Features:

- ✓ Materials as Specified
- ✓ Finish as Specified
- ✓ Pack Material as Specified
- ✓ Mounting Brackets
- ✓ Threaded Connections Available
- ✓ Companion Flanges
- ✓ Flange Drilling as Specified



Typical Performance



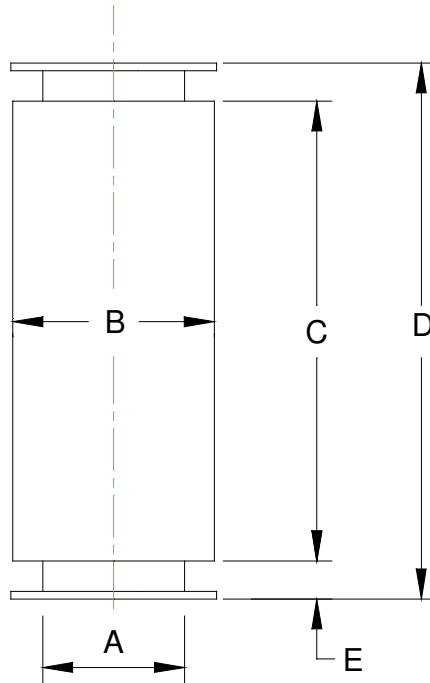
Application:

The **VANEC** Model 417 Exhaust Silencer is designed for use in suppressing the discharge noise from high speed blowers, fans and centrifugal air handling devices exhausting to atmosphere.

The Model 417 Exhaust Silencer, when properly applied, will reduce discharge noise to a community acceptable level for dwellings located further than 800 ft. from the discharge opening. Silencer performance will depend upon actual operating conditions.

The **VANEC** Model 417 Exhaust Silencer may be mounted either vertically or horizontally.

Issue: 10/2002



VANEC Model 417

Size	Dimensions in Inches					Est. Wt. Lbs.
	A	B	C	D	E	
417-12	12	20	38	44	3	208
417-14	14	22	44	52	4	283
417-16	16	24	50	58	4	367
417-18	18	26	56	64	4	425
417-20	20	28	62	72	5	598
417-22	22	30	68	78	5	699
417-24	24	32	74	84	5	813
417-26	26	34	80	90	5	956
417-28	28	36	86	96	5	1,176
417-30	30	38	92	102	5	1,307
417-32	32	40	98	108	5	1,646
417-34	34	42	106	116	5	1,853
417-36	36	44	110	120	5	2,070
417-42	42	50	128	140	6	2,804
417-48	48	56	146	158	6	3,621
417-54	54	62	164	180	8	4,603
417-60	60	68	182	198	8	5,669

VANEC Industrial Silencers
716-827-4959