

VANEC

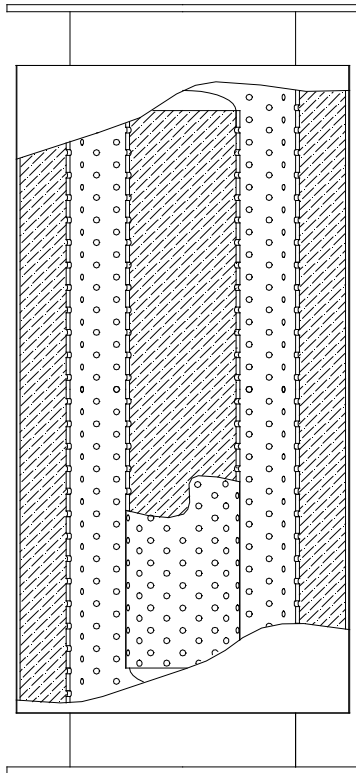
Model 416 Exhaust Silencer

Standard Features:

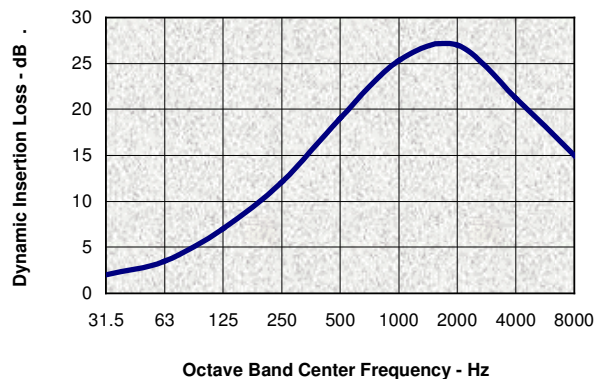
- ✓ All Steel Welded Construction
- ✓ Quality Fabrication Techniques
- ✓ Fiberglass Absorptive Pack
- ✓ Operating Temperature Above 250°F
- ✓ Plate Flanges to Match ASA 125# Flanges
- ✓ Prime Coated Exterior Surfaces

Optional Features:

- ✓ Materials as Specified
- ✓ Finish as Specified
- ✓ Pack Material as Specified
- ✓ Mounting Brackets
- ✓ Threaded Connections Available
- ✓ Companion Flanges
- ✓ Flange Drilling as Specified



Typical Performance

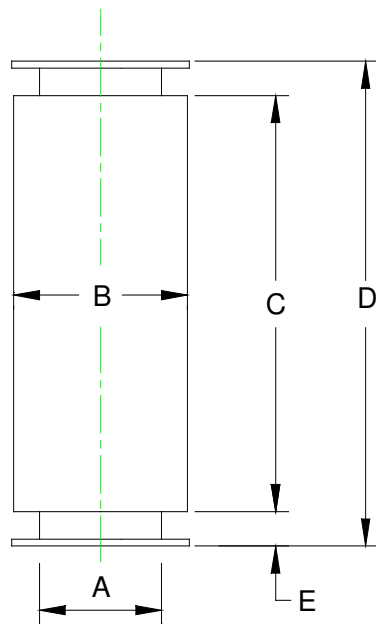


Application:

The **VANEC** Model 416 Exhaust Silencer is designed for use in suppressing the discharge noise from high speed blowers, fans and centrifugal air handling devices exhausting to atmosphere.

The Model 416 Exhaust Silencer, when properly applied, will reduce discharge noise to a community acceptable level for dwellings located further than 1,600 ft. from the discharge opening. Silencer performance will depend upon actual operating conditions.

The **VANEC** Model 416 Exhaust Silencer may be mounted either vertically or horizontally.



VANEC Model 416

| Size | Dimensions in Inches | | | | | Est. Wt. Lbs. |
|--------|----------------------|----|-----|-----|---|---------------|
| | A | B | C | D | E | |
| 416-12 | 12 | 20 | 26 | 32 | 3 | 166 |
| 416-14 | 14 | 22 | 32 | 40 | 4 | 227 |
| 416-16 | 16 | 24 | 32 | 40 | 4 | 279 |
| 416-18 | 18 | 26 | 38 | 46 | 4 | 326 |
| 416-20 | 20 | 28 | 44 | 54 | 5 | 471 |
| 416-22 | 22 | 30 | 44 | 54 | 5 | 508 |
| 416-24 | 24 | 32 | 50 | 60 | 5 | 619 |
| 416-26 | 26 | 34 | 56 | 66 | 5 | 709 |
| 416-28 | 28 | 36 | 56 | 66 | 5 | 828 |
| 416-30 | 30 | 38 | 62 | 72 | 5 | 939 |
| 416-32 | 32 | 40 | 68 | 78 | 5 | 1,217 |
| 416-34 | 34 | 42 | 68 | 78 | 5 | 1,278 |
| 416-36 | 36 | 44 | 74 | 84 | 5 | 1,511 |
| 416-42 | 42 | 50 | 86 | 98 | 6 | 2,030 |
| 416-48 | 48 | 56 | 98 | 110 | 6 | 2,553 |
| 416-54 | 54 | 62 | 110 | 126 | 8 | 3,158 |
| 416-60 | 60 | 68 | 122 | 138 | 8 | 3,731 |

VANEC Industrial Silencers
716-827-4959